



# Kentucky Long-Range Statewide Transportation Plan (LRSTP) 2022-2045



**GET THERE TOGETHER.**

**Kentucky's Long-Range  
Transportation Vision**



GET THERE TOGETHER.

## Kentucky's Long-Range Transportation Vision

### Building Blocks of the LRSTP



## Overview

- Identifies the *goals, policies, needs and analysis tools* that set the direction of Kentucky's transportation system for the next 25 years.
- Is *multimodal* and will look at how we can best get you where you want to go by whatever mode.
- Include an *Implementation Plan* that will outline short-term actions that will support the vision, goals and objectives, and performance measures defined within the LRSTP.



GET THERE TOGETHER.

Kentucky's Long-Range  
Transportation Vision

18-month Project Schedule







## Kentucky's Long-Range Transportation Vision

GET THERE TOGETHER.



## Who Are We?

A Demographic Overview  
of Kentucky



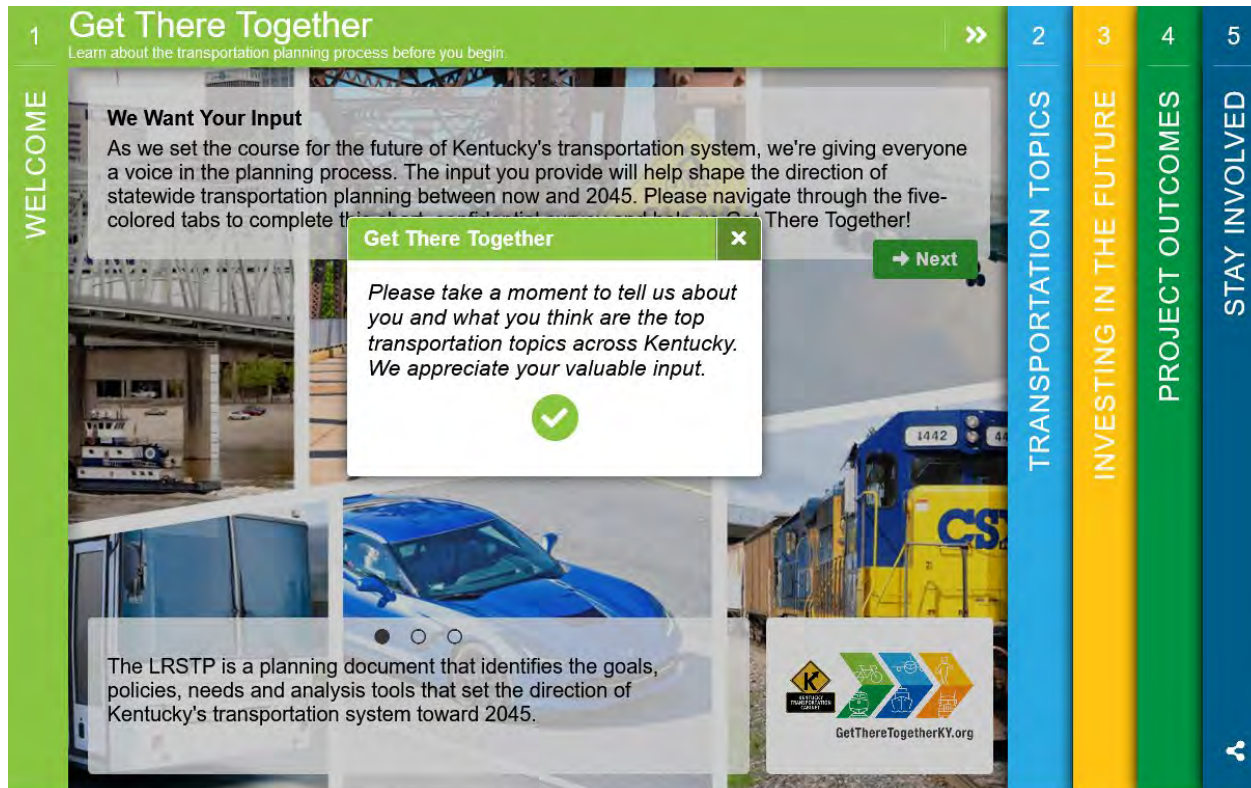
## Accomplishments

- LRSTP Branding
- Draft Statewide Demographics Analysis
- LRSTP Communications Plan



## Kentucky's Long-Range Transportation Vision

**GET THERE TOGETHER.**



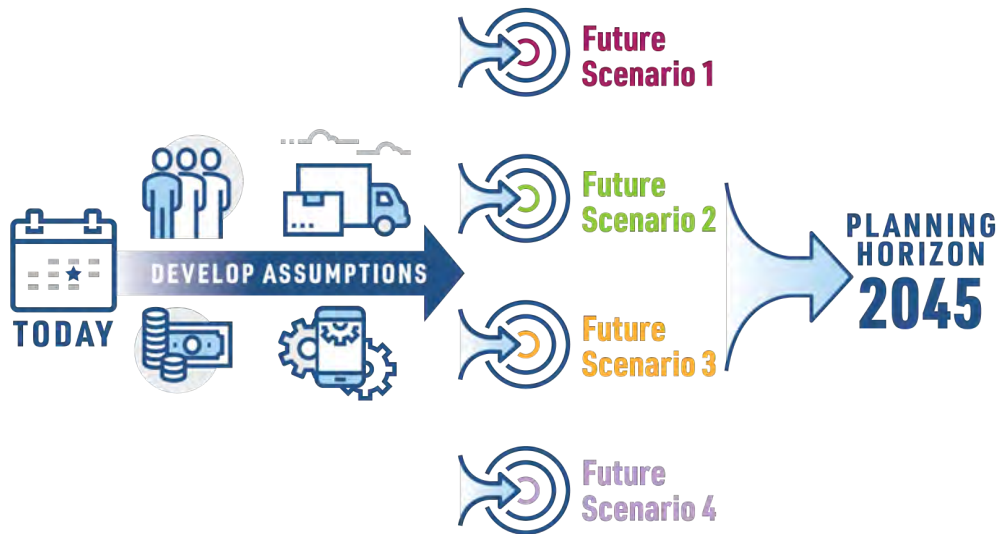
# Kentucky Statewide Transportation Survey

- Open from Oct. 22 to Dec. 6, 2021
- Includes 12 interactive questions in English & Spanish
- Available as on-line & paper versions
- Statewide outreach through media outlets and planning partners



GET THERE TOGETHER.

## Kentucky's Long-Range Transportation Vision



## Next Steps

- **2022 KY *Transportation at a Glance***
- **KY Statewide Transportation Survey Report (early January 2022)**
- **Scenario Planning & Analysis (Dec. 2021 to March 2022)**
- **Draft LRSTP Vision, Goals, & Guiding Principles**